

# Bell Intermediate Student Expectations



# Student Eligibility for Activities



Planner Page 12

## Student Eligibility for Activities

To participate in activities at school, students must practice academic integrity, follow school rules and conduct themselves in an orderly manner, be respectful to adults and considerate of others. They must also maintain a quarterly grade point average of 2.0 or above. The criteria for the restriction list is one or more of the following:

- Lower than a 2.0 GPA (Grade Point Average)
- Not serving all required detentions prior to the event
- Four N/U's in citizenship/work habits
- Suspensions

The Restriction List is generated each quarter. Students on the Restriction List are unable to participate in activities such as school dances, the 8th grade promotion party, activities, and field trips.

Bell Intermediate honors its successful 8th grade students at our annual Commencement ceremony on the last day of school. **Students must have a cumulative GPA of 2.0 or higher to participate. Students identified for retention, or those who do not meet school/district standards for behavior or academic achievement, will not be able to participate in the Commencement ceremony.**

## Things to Know...

**Medications:** All prescriptions and over the counter medications must be handled through the Nurse's Office.

**School ID:** Students are expected to carry their school identification card (I.D.) with them at all times.

Scholars are loaned textbooks/Chromebooks and are required to keep these materials in good condition. Scholars are responsible for the cost and replacement. Fines must be cleared in order to participate in end of the year activities, including commencement.

Scholars must wear their helmets when riding to school and back home. Riders can lock up their bikes and store skateboards/scooters as a courtesy. This privilege can be revoked for students who do not abide by the safety rules. Riding on campus is **not** permitted at any time. Bell is not responsible for lost, stolen or damaged property.



To participate in activities at school, students must practice academic integrity, follow school rules and conduct themselves in an orderly manner, be respectful to adults and considerate of others. They must also maintain a quarterly grade point average of 2.0 or above. The criteria for the restriction list is one or more of the following:

- Lower than a 2.00 GPA (Grade Point Average)
- Not serving all required detentions prior to the event
- Four N/U's in citizenship/work habits
- Suspensions

The Restriction List is generated each quarter. Students on the Restriction List are unable to participate in activities such as school dances, the 8th grade promotion party, activities, and field trips.

Bell Intermediate honors its successful 8th grade students at our annual Commencement ceremony on the last day of school. **Students must have a cumulative GPA of 2.0 or higher to participate. Students identified for retention, or those who do not meet school/district standards for behavior or academic achievement, will not be able to participate in the Commencement ceremony.**

# Bell Roadrunners Are on Time for Classes!



Planner Page 15

## Bell Roadrunners Are on Time for Classes!

Students are expected to be in class and in their seats when the bell rings for every period. When students are late to class they disrupt the learning environment for all students. The passing periods are 5 minutes which allows enough time to use the restroom and get to the next class.

### What are the consequences for being tardy to class?

#### Period 1

Tardies #1-3:  
Student will receive a verbal warning by teacher

Tardy #4:  
Teacher/student conference, detention assigned by the office

Tardy #5: AP contact parent and student, detention assigned by the office

#### Periods 2-6

Tardy #1: Student will receive a verbal warning by teacher

Tardy #2:  
Teacher/student conference, detention assigned by the office

Tardies #3-4:  
Progressive detention assigned by the office

Tardy #5:  
Parent/student conference w/AP, after school detention assigned

#### 6+ Tardies in ANY Period

- Parent Conference
- Attendance Contract (SART)
- Loss of school activities/privileges

*Consequences listed above are progressive*



School Administration reserves the right to modify this policy to ensure a safe campus for all students.



Students are expected to be in class and in their seats when the bell rings for every period. When students are late to class they disrupt the learning environment for all students. The passing periods are 5 minutes which allows enough time to use the restroom and get to the next class.

## **Period 1**

### Tardies #1-3:

Student will receive a verbal warning by teacher

### Tardy #4:

Teacher/student conference, detention assigned by the office

Tardy #5: AP contact parent and student, detention assigned by the office

## **Periods 2-6**

Tardy #1: Student will receive a verbal warning by teacher

### Tardy #2:

Teacher/student conference, detention assigned by the office

### Tardies #3-4:

Progressive detention assigned by the office

### Tardy #5:

Parent/student conference w/AP, after school detention assigned

**6+ Tardies  
in ANY Period**

- Parent Conference
- Attendance Contract (SART)
- Loss of school activities/privileges

*Consequences listed above  
are progressive*





# Hall Passes @ Bell

- Scan with your ID card or planner
- 2 hall passes per day
- Limited amount of time out of class
- Limited amount of students out of class at the same time

# Bell Roadrunners Use Cell Phones Responsibly!



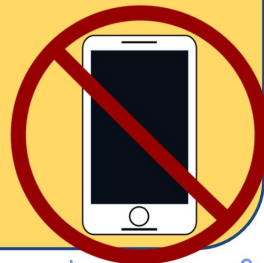
Planner Page 20

## Bell Roadrunners Use Cell Phones Responsibly!

**Cell Phones must be turned off and in backpacks while on school grounds and during school hours.**

This includes before/after school, during passing periods, in the restroom, in the locker room, and during lunch time.

*The office phone is available during school hours for emergencies.*



*What are the consequences for using my phone on campus?*

First Offense: Confiscated and returned to student

Second Offense: Confiscated, parent contacted, and detention assigned

Third + Offense: Confiscated, cell phone contract, parent contacted, and two detentions assigned



School Administration reserves the right to modify this policy to ensure a safe campus for all students.

Students may use phones and electronic devices before or after school hours outside of the gates.

During the school day, phones/bluetooth devices must remain off and inside backpacks unless the teachers give explicit permission.

# What are the Consequences for Using Your Phone on Campus?

First Offense: Confiscated and returned to student

Second Offense: Confiscated and returned to student and detention assigned

Third + Offense: Confiscated, student contract for defiance, parent contacted, 1 hour detention

# Bell Roadrunners Practice Academic Integrity!



Planner Page 16

## Bell Roadrunners Practice Academic Integrity!

**Cheating** is prohibited and is defined as, but not limited to, "using or giving any form of aid(s), including AI, in completing the assigned work and/or tests for a class."

**Plagiarism** is prohibited and is defined as, but not limited to "the taking of ideas/work/writings from another source, including AI, and offering them as your own."

What are the consequences for  
cheating, plagiarism or inappropriate use of AI?



First offense: A zero/failing grade with a Parent/Teacher conference, lowered Work Habits/Citizenship grade and Administration notified.

Second offense: same as above and a referral to AP with assigned detention and loss of School activities/privileges for that quarter with in-house suspension.



School Administration reserves the right to modify this policy to ensure a safe campus for all students.



**Cheating** is prohibited and is defined as, but not limited to, *“using or giving any form of aid(s), including AI, in completing the assigned work and/or tests for a class.”*

**Plagiarism** is prohibited and is defined as, but not limited to *“the taking of ideas/work/writings from another source, including AI, and offering them as your own.”*

# What are the Consequences for Cheating, Plagiarism, or Inappropriate use of AI?



First offense: A zero/failing grade with a Parent/Teacher conference, lowered Work Habits/Citizenship grade and Administration notified.

Second offense: same as above and a referral to AP with assigned detention and loss of School activities/privileges for that quarter with in-house suspension.

# Bell Roadrunners Dress for Success!



Planner Page 17

## Bell Roadrunners Dress for Success!

**Clothing worn by students will be opaque and appropriately cover the student's body.**

- Student clothing must cover undergarments, or where undergarments typically would be, at all times.
- Clothing must cover all areas of the midriffs and must not expose cleavage, buttocks, or genitals.

**Clothing worn by students will align with the instructional purpose and meet safety requirements so it does not cause a disruption to the educational environment.**

- Appropriate footwear must be worn on campus at all times. Flip flops and slippers or any shoes that are open-toed/backless (ie: Crocs) are not permitted.
- PE clothes are not to be worn outside of Physical Education class.
- Earbuds / headphones are not permitted on campus for safety reasons.
- Jewelry or accessories that could cause injury or cause a distraction or disturbance or that can create a health or safety hazard. This includes but is not limited to chains, rings, pins, and spiked accessories. Ammunition or look-alike ammunition of any type may not be worn. Accessories that are considered a hazard during PE class should be removed to ensure safety.
- Sleepwear, slippers, blankets, or costume-like headwear are not acceptable.
- Oversized clothing is not allowed. Pants that will not stay on without a belt are considered oversized.

**All clothing and accessories are prohibited from:**

- Advocating violence or referencing criminal activity (including, but not limited to, the use of drugs, alcohol or gang affiliations);
- Including pornography, hate speech (as defined by law), or political slogans;
- Including images or language that creates a hostile or intimidating environment for any protected class.

Wearing hats on campus is a privilege that may be revoked at any time during the school year. Hats must be removed as students enter the classroom unless the headwear is such that is a cultural item. **Students who would like to wear hats outside have the following options:** purchasing a Bell hat from the office, wearing a plain (no logo) black, blue, or gray hat, wearing a College/University hat as Bell is a college going atmosphere. No exceptions. All other hats **and beanies** will be confiscated.



**Students may be asked to change into PE clothes or call parents to bring appropriate clothes. Items will be held until the end of the school day.**



School Administration reserves the right to modify this policy to ensure a safe campus for all students.



**Clothing worn by students will be opaque and appropriately cover the student's body.**

- Student clothing must cover undergarments, or where undergarments typically would be, at all times.
- Clothing must cover all areas of the midriffs and must not expose cleavage, buttocks, or genitals.

**Clothing worn by students will align with the instructional purpose and meet safety requirements so it does not cause a disruption to the educational environment.**


- Appropriate footwear must be worn on campus at all times. Flip flops and slippers or any shoes that are open-toed/backless (ie: Crocs) are not permitted.
- PE clothes are not to be worn outside of Physical Education class.
- Earbuds / headphones are not permitted on campus for safety reasons.
- Jewelry or accessories that could cause injury or cause a distraction or disturbance or that can create a health or safety hazard. This includes but is not limited to chains, rings, pins, and spiked accessories. Ammunition or look-alike ammunition of any type may not be worn. Accessories that are considered a hazard during PE class should be removed to ensure safety.
- Sleepwear, slippers, blankets, or costume-like headwear are not acceptable.
- Oversized clothing is not allowed. Pants that will not stay on without a belt are considered oversized.

**All clothing and accessories are prohibited from:**

- Advocating violence or referencing criminal activity (including, but not limited to, the use of drugs, alcohol or gang affiliations);
- Including pornography, hate speech (as defined by law), or political slogans;
- Including images or language that creates a hostile or intimidating environment for any protected class.



Wearing hats on campus is a privilege that may be revoked at any time during the school year. Hats must be removed as students enter the classroom unless the headwear is such that is a cultural item. **Students who would like to wear hats outside have the following options:** purchasing a Bell hat from the office, wearing a plain (no logo) black, blue, or gray hat, wearing a College/University hat as Bell is a college going atmosphere. No exceptions. All other hats **and beanies** will be confiscated.

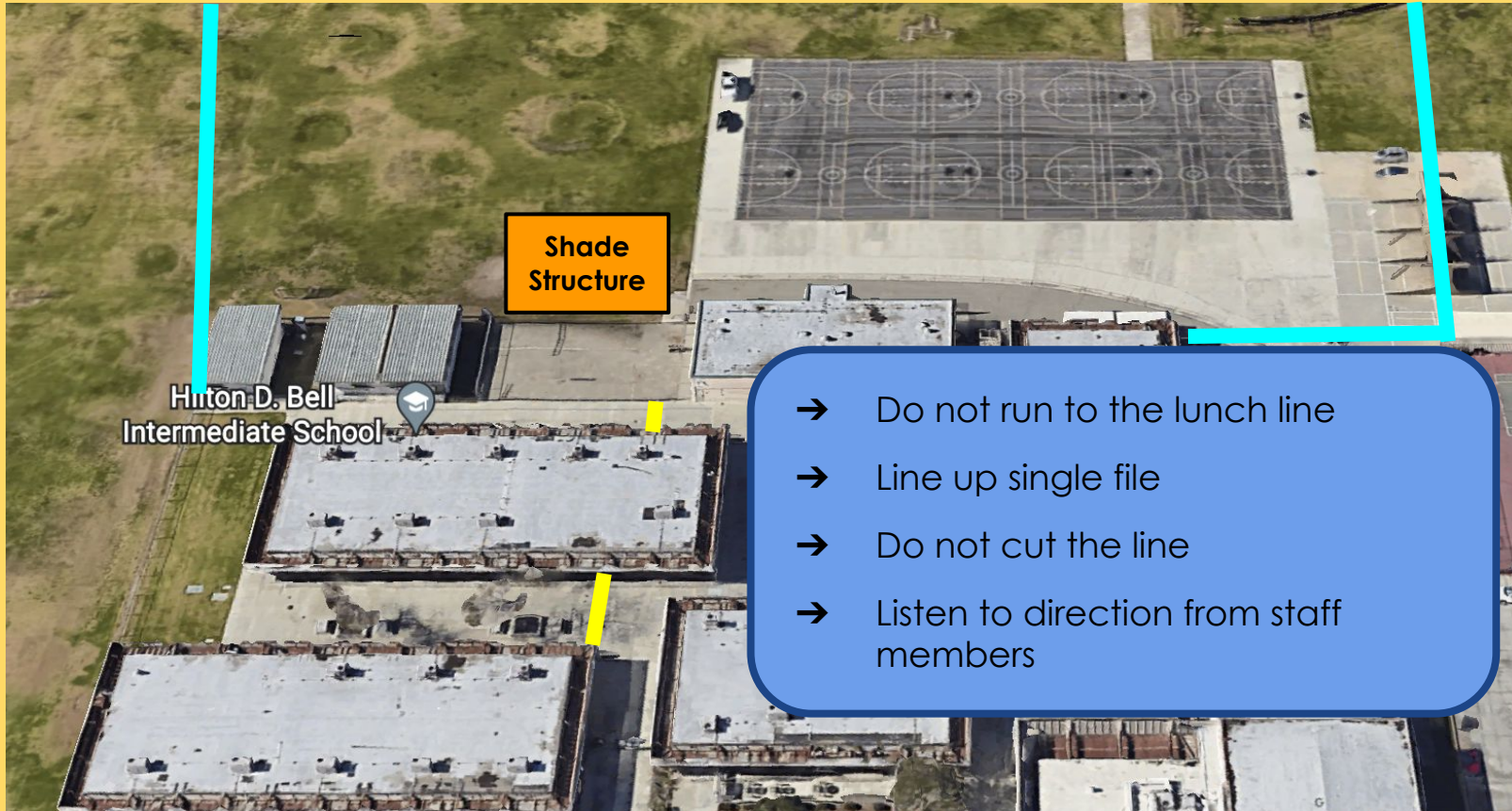


***Students may be asked to change into PE clothes or call parents to bring appropriate clothes. Items will be held until the end of the school day.***

# What are the Consequences for Violating the Dress Code?

- If it can be easily fixed, fix it!
  - ◆ Put on another shirt/sweatshirt
  - ◆ Turn shirt inside out
  - ◆ Take off the hat
- If it can't be easily fixed, go to the office
  - ◆ We can provide loaner clothing
  - ◆ You can change into PE clothes
  - ◆ Parents can come bring other clothing
- Repeated offenses...
  - ◆ Parent Phone Call
  - ◆ Detention
  - ◆ Parent Meeting
  - ◆ Suspension

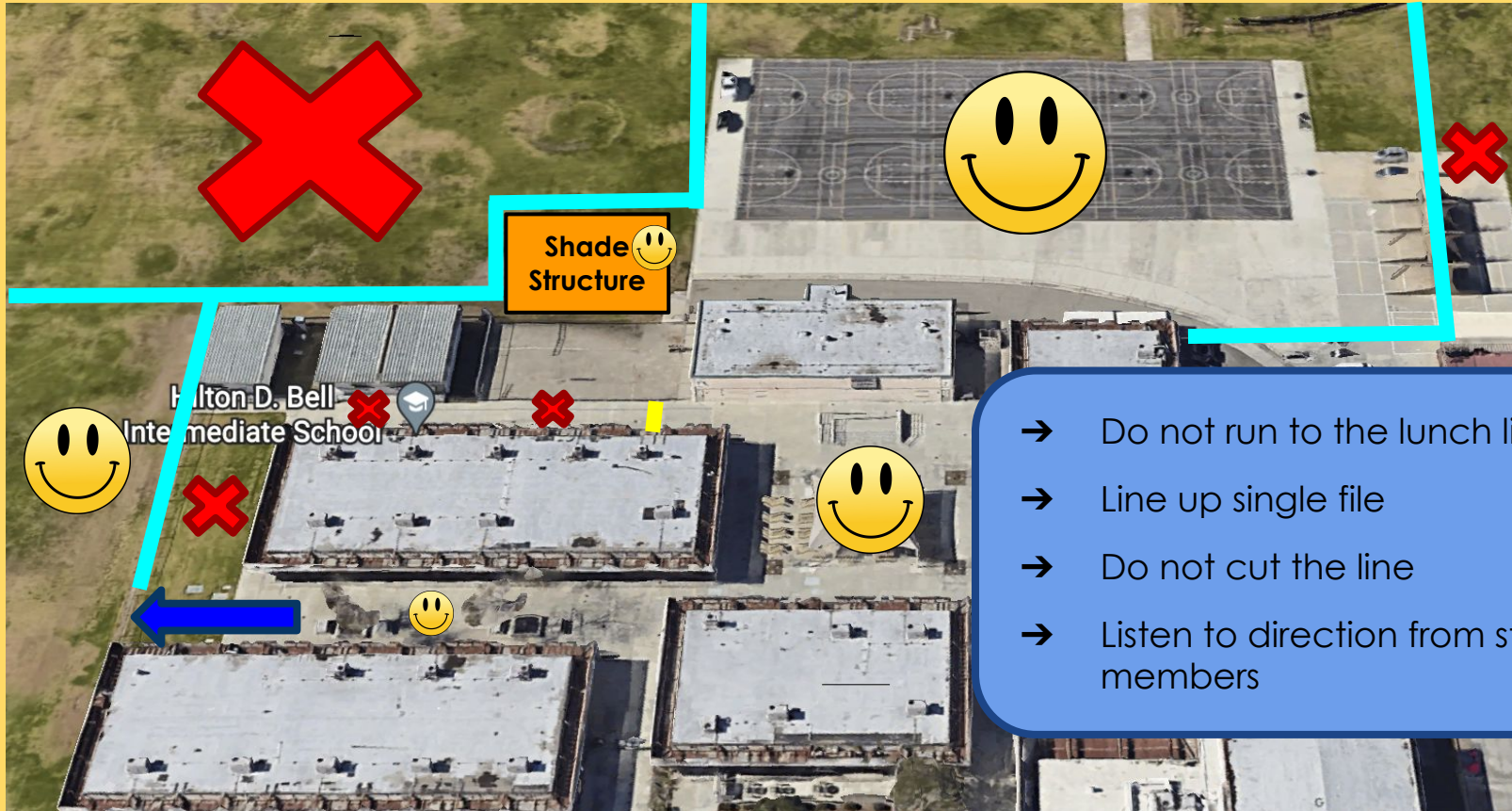
# Lunch Time Boundaries and Procedures



- Do not run to the lunch line
- Line up single file
- Do not cut the line
- Listen to direction from staff members

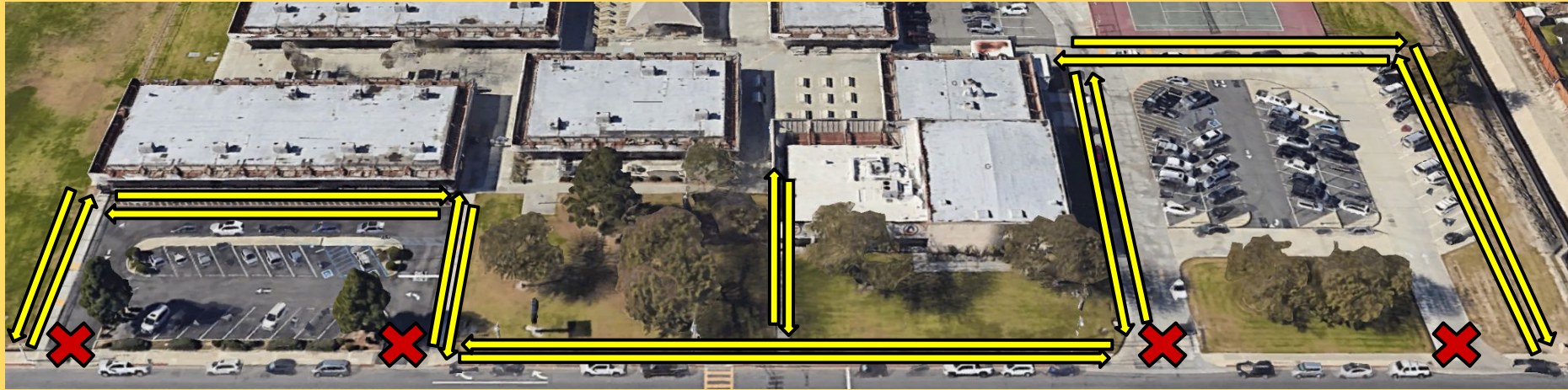


## Temporary Lunch Time Boundaries and Procedures



- Do not run to the lunch line
- Line up single file
- Do not cut the line
- Listen to direction from staff members

# Student Safety & Traffic Flow in Front of Campus



No pedestrian traffic  
across driveways

No pedestrian traffic in  
parking lots...do not use  
them to cut through!

Bikes, scooters, and skateboards  
must be walked on school  
property; this includes the  
parking lots and sidewalks that  
border them

Students must cross the street at  
the crosswalk in front of the  
school or at the corner light

Helmets must be worn





# Bell Roadrunners are Respectful!



Planner Page 18

## Bell Roadrunners are Respectful!

**Bell Intermediate prohibits all types of bullying, cyber-bullying and harassment.**

- Bullying is defined as: when someone says or does something intentionally hurtful and they keep doing it even when you tell them to stop or show them that you are upset.
- Any Offense: Possible detention or suspension, parent conference, student contract, police notification, and/or referral to GGUSD Discipline Committee for removal from Bell.

Students and families may anonymously report concerns to Admin using STOPit:

Web: <https://appweb.stopitsolutions.com/directory>  
Phone: 1-916-562-3130



## Bell is No Place for Hate!



**Bell has ZERO TOLERANCE for racial or gender slurs; these terms have no place on Bell's campus, as every student should feel welcome.**

We work to be a **No Place for Hate School** by participating in activities that focus on inclusion throughout the year.

### Profanity is not welcome at Bell Intermediate

Non-directed: Detention, and parent contact/conference.

Directed: Parent contact/conference and use of student behavior contract. Detention or possible suspension depending on circumstances.



School Administration reserves the right to modify this policy to ensure a safe campus for all students.

## **Profanity is not welcome at Bell Intermediate**

Non-directed: Detention, and parent contact/conference.

Directed: Parent contact/conference and use of student behavior contract. Detention or possible suspension depending on circumstances.

## IS IT BULLYING?

WHEN SOMEONE SAYS OR DOES SOMETHING  
UNINTENTIONALLY AND THEY DO IT ONCE, THAT'S

**RUDE**

WHEN SOMEONE SAYS OR DOES SOMETHING  
INTENTIONALLY HURTFUL AND THEY DO IT ONCE, THAT'S

**MEAN**

WHEN SOMEONE SAYS OR DOES SOMETHING  
INTENTIONALLY HURTFUL AND THEY KEEP DOING IT -EVEN  
WHEN YOU TELL THEM TO STOP OR SHOW THEM THAT

YOU'RE UPSET, THAT'S

**BULLYING**

**Immediate prohibits all types of bullying,  
 cyber-bullying and harassment.**

defined as: when someone says or does something  
 intentionally hurtful and they keep doing it even when you tell  
 stop or show them that you are upset.

Consequences: Possible detention or suspension, parent  
 conference, student contract, police notification, and/or  
 referral to GGUSD Discipline Committee for removal from Bell.

*Students and families may anonymously report concerns to Admin  
 using STOPit:*

Web: <https://appweb.stopitsolutions.com/directory>

Phone: 1-916-562-3130



**Bell has ZERO TOLERANCE for racial or gender slurs; these terms have no place on Bell's campus, as every student should feel welcome.**

*We work to be a **No Place for Hate School** by participating in activities that focus on inclusion throughout the year.*



# The Roadrunner Way



Planner Inside Front Cover



## What it Means to Be a ROADRUNNER

*Success is the sum of small efforts, repeated day in and day out." ~Unknown*

**Academic Skills + Personal Skills = Lifelong Success**

### **Be Kind & Respectful**

Seek to gain an understanding of those who are different from ourselves  
Recognize that respecting individual dignity and promoting harmony are the responsibilities of all Roadrunners

### **Ensure Safety**


Speak out when you see injustice like bullying and prejudice or risky behaviors  
Get involved and let staff know about concerns  
Know and follow the Roadrunner Code of Conduct  
Understand the Roadrunner Routines for Success

### **Lead Responsibly**

Believe that one person can make a difference  
It is important to show courage, have passion and be humble  
Understand that everyone's growth looks different  
Be an upstander and not a bystander

### **Learn Actively**

Be engaged & Learn how to STUDY to earn a 3.0 GPA or higher  
Be proactive -Turn everything in on time & follow up on missing work, especially if absent  
Refrain from making excuses & procrastinating  
Time management – avoid interruptions & be present  
Take risks – utilize your failures as a guide towards success – Build your skills  
Seek help and ask questions \*Mistakes are proof you're trying  
Correcting mistakes are proof that you're growing!  
The power of 'YET' (I have not learned it YET!)

Name:	ID #	Grade
<div> <div> We are all a piece of the puzzle...  </div> <div> What commitments will you make this year to complete the puzzle? </div> </div>		
I will demonstrate <b>KINDNESS</b> by...		
I will demonstrate <b>RESPECT</b> by...		
I will <b>LEAD RESPONSIBLY</b> by...		
I will <b>LEARN ACTIVELY</b> by....		

# How Will You Start Your Chain Reaction?

Choose one  
element of BELL  
to commit to  
working toward  
this quarter and  
write it on your  
puzzle piece